

## SM Spring Mounts

### High Performance Anti Vibration Mountings

#### Why choose Farrat SM Spring Mounts?

Farrat SM Spring Mounts are high performance anti-vibration mountings with adjustable levelling and damping control for efficient isolation of dynamic (active) machinery and protection of sensitive (passive) equipment and machinery.

High deflection helical steel springs are contained in stove enamelled aluminium housings to provide a robust and reliable low frequency solator. The levelling fixing screw with locknut are zinc plated, however Gunmetal versions of sizes suffix G are available on request.

#### General information

The range of standard mountings allow up to 25 mm static deflection and are specially designed for land based installations with high vibration isolation. Where greater static deflections is required, the 50 mm deflection springs in the standard housings can be selected.

The load range is from 3kg up to 3,818kg per mount. All mountings are fitted with a built-in leveling device, the operation of which is described in the installation instructions.

#### Features

- ▶ Excellent vertical shock and vibration isolation performance
- ▶ High quality helical steel spring isolators
- ▶ Environmental protection casings
- ▶ Robust and reliable low frequency mounts
- ▶ Levelling facility

#### Typical Applications

- ▶ Emergency power supplies
- ▶ Air handling units
- ▶ Air conditioning machines
- ▶ DC-AC converters
- ▶ Compressor packages
- ▶ Electrical equipment and generator sets
- ▶ Chiller units
- ▶ Pumps

Fig 1.1 Zinc plated SM Spring Mount

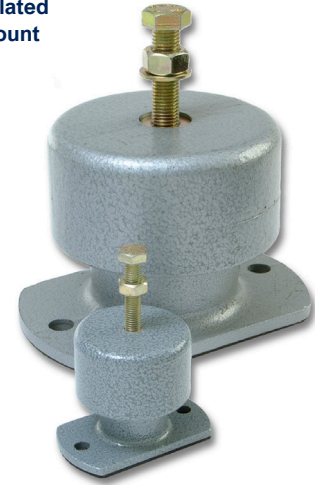
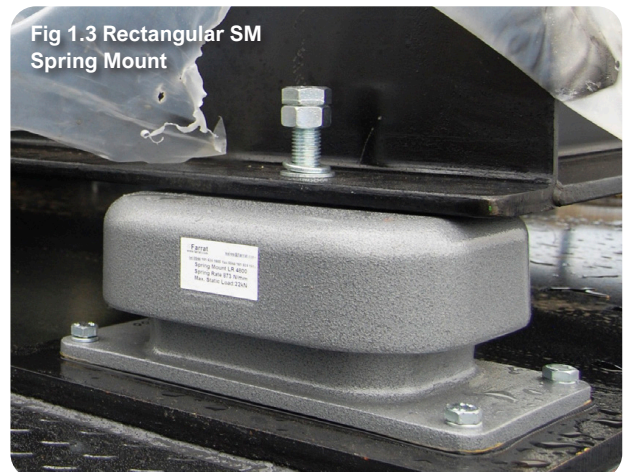


Fig 1.2 SM Spring Mount in Industrial application

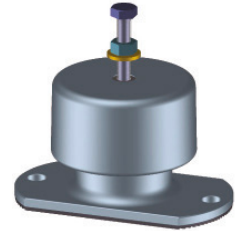


Fig 1.3 Rectangular SM Spring Mount

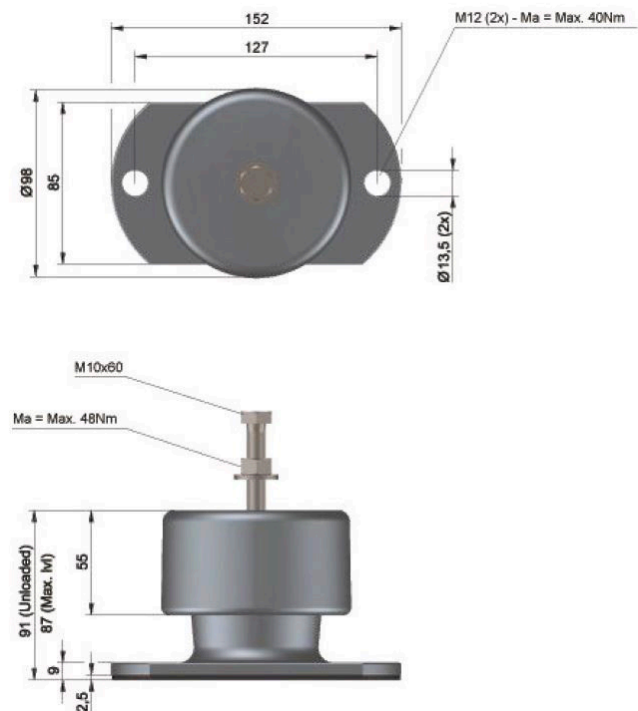
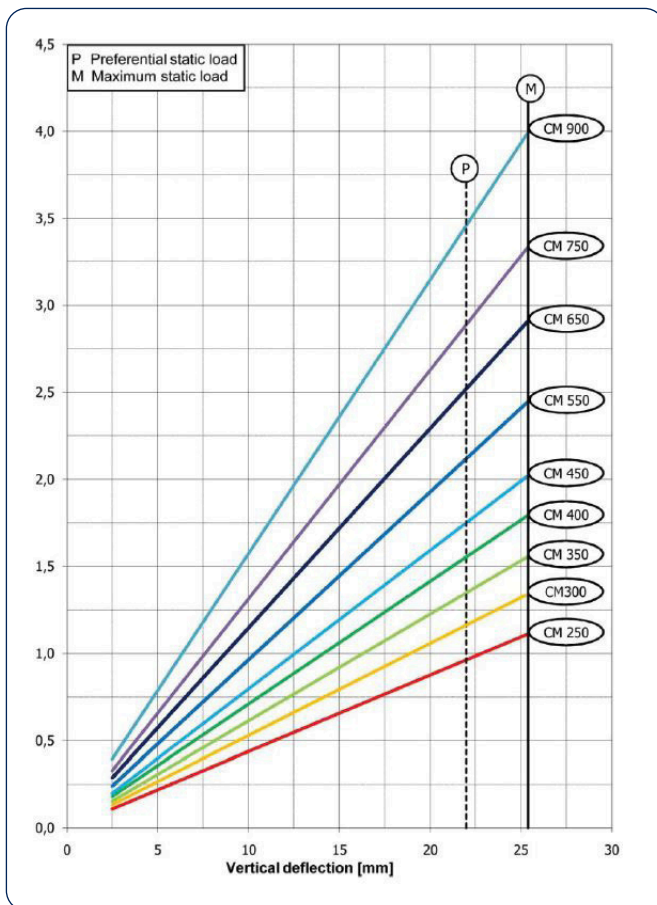


## SM.CM Spring Mounts

TYPE	VERTICAL STIFFNESS (N/ MM)	HORIZONTAL STIFFNESS AT PREFERENTIAL LOAD (N/MM)	MAX LOAD (N) 25.4mm DEFLECTION 3.14 Hz	PREFERENTIAL LOAD (N) 21.84mm DEFLECTION 3.38 Hz
SM.CM250	43,8	37,4	1112	963
SM.CM300	52,5	44,4	1334	1155
SM.CM350	61,3	58,3	1557	1348
SM.CM400	70,1	61,7	1780	1541
SM.CME450	79,6	65,1	2021	1750
SM.CM550	96,3	79,2	2447	2119
SM.CM650	114,6	103,1	2911	2521
SM.CM750	131,4	118,9	3336	2890
SM.CM900	157,4	128,2	3994	3460

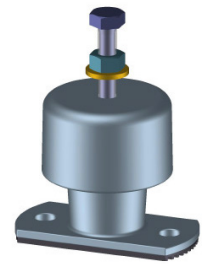


## Vertical load/deflection characteristics SM.CM

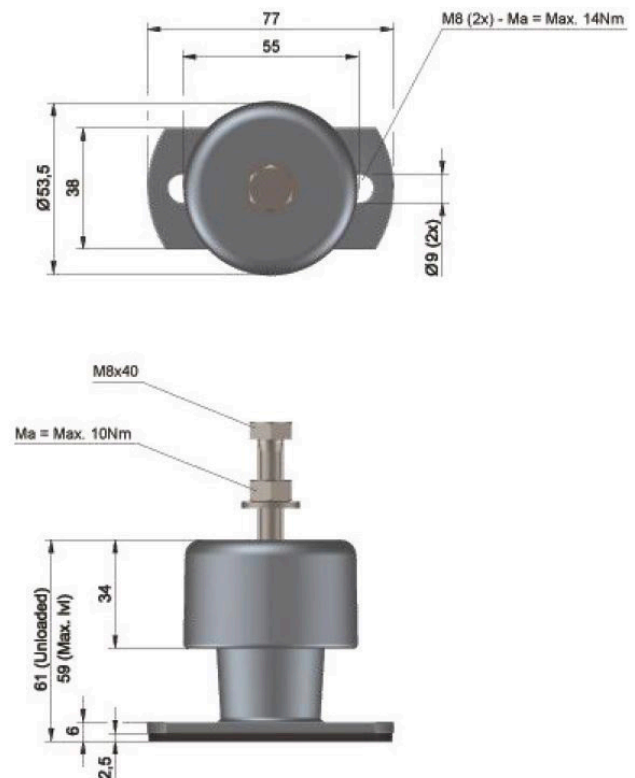
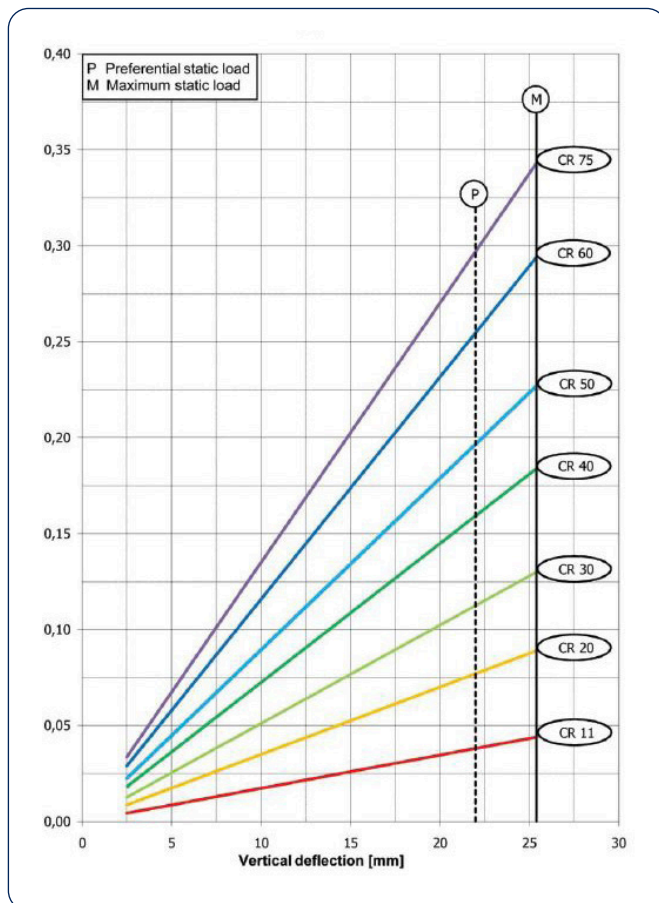


## SM.CR Spring Mounts

TYPE	VERTICAL STIFFNESS (N/ MM)	HORIZONTAL STIFFNESS AT PREFERENTIAL LOAD (N/MM)	MAX LOAD (N) 25.4mm DEFLECTION 3.14 Hz	PREFERENTIAL LOAD (N) 21.84mm DEFLECTION 3.38 Hz
SM.CR11	1,75	0,7	44	39
SM.CR20	3,50	1,0	89	77
SM.CR30	5,10	2,1	130	113
SM.CR40	7,00	2,6	178	155
SM.CR50	9,00	3,2	227	197
SM.C560	11,60	4,7	294	255
SM.CR75	13,50	4,2	343	297



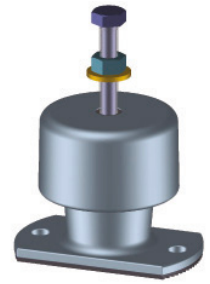
## Vertical load/deflection characteristics SM.CR



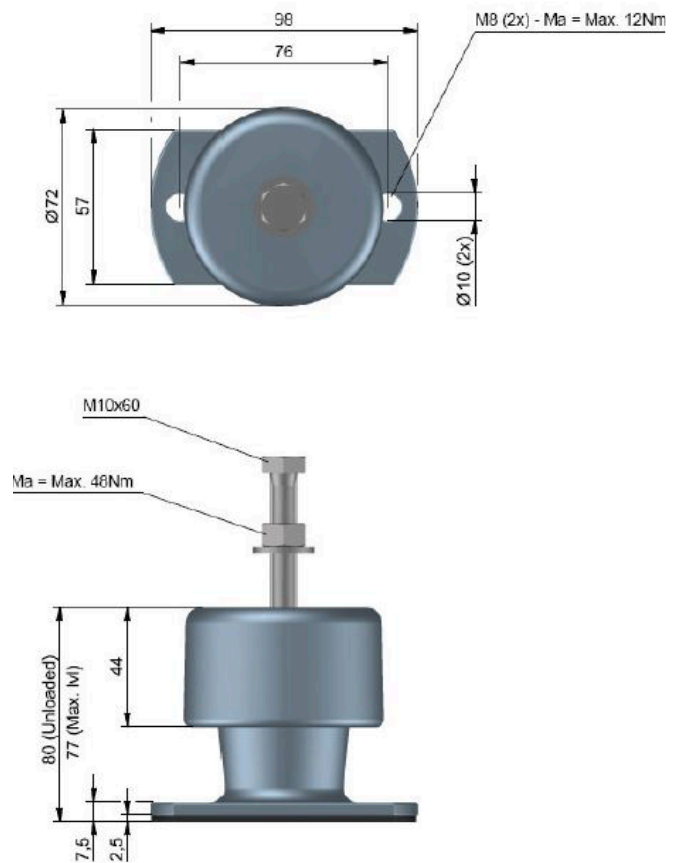
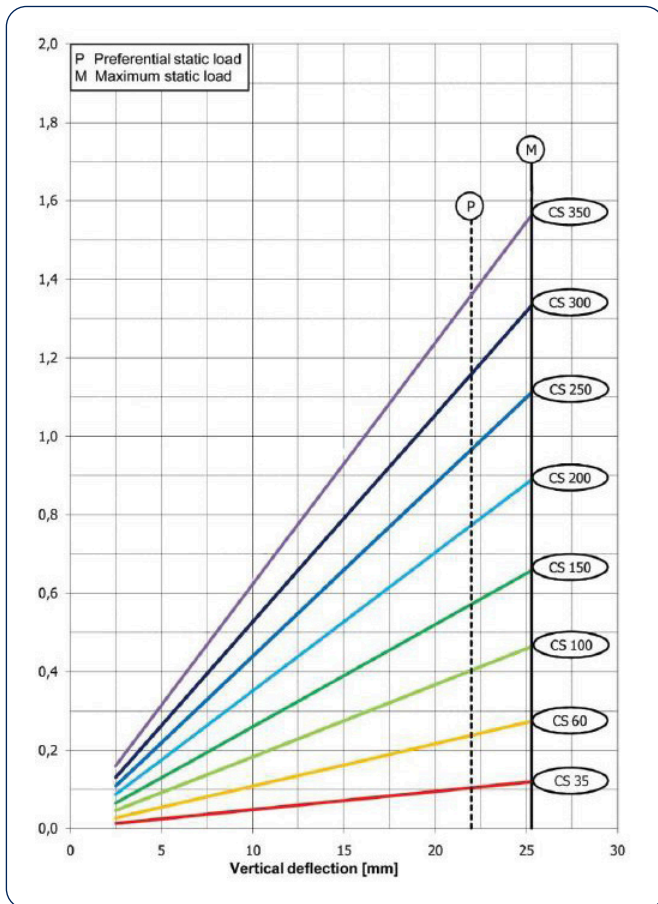
All information in this datasheet is for guidance only based on current knowledge and may be subject to change and correction.

# SM.CS Spring Mounts

TYPE	VERTICAL STIFFNESS (N/ MM)	HORIZONTAL STIFFNESS AT PREFERENTIAL LOAD (N/MM)	MAX LOAD (N) 25.4mm DEFLECTION 3.14 Hz	PREFERENTIAL LOAD (N) 21.84mm DEFLECTION 3.38 Hz
SM.CS35	6,1	2,4	156	136
SM.CS60	10,8	4,2	274	238
SM.CS100	18,3	6,8	464	402
SM.CS150	26,0	9,3	658	570
SM.CS200	35,0	12,1	889	770
SM.CS250	43,8	14,5	1112	963
SM.CS300	52,5	16,4	1333	1156
SM.CS350	63,8	18,3	1620	1404



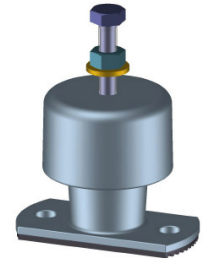
## Vertical load/deflection characteristics SM.CS



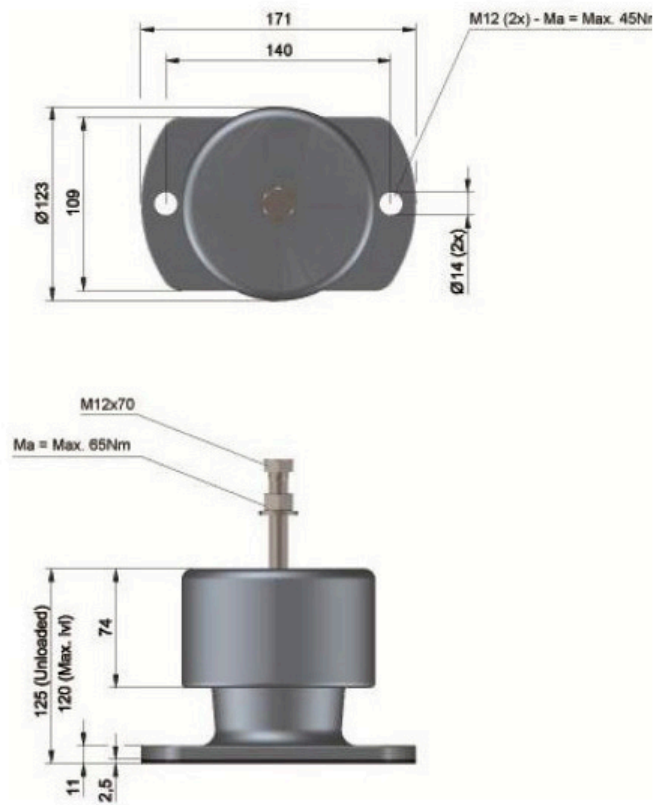
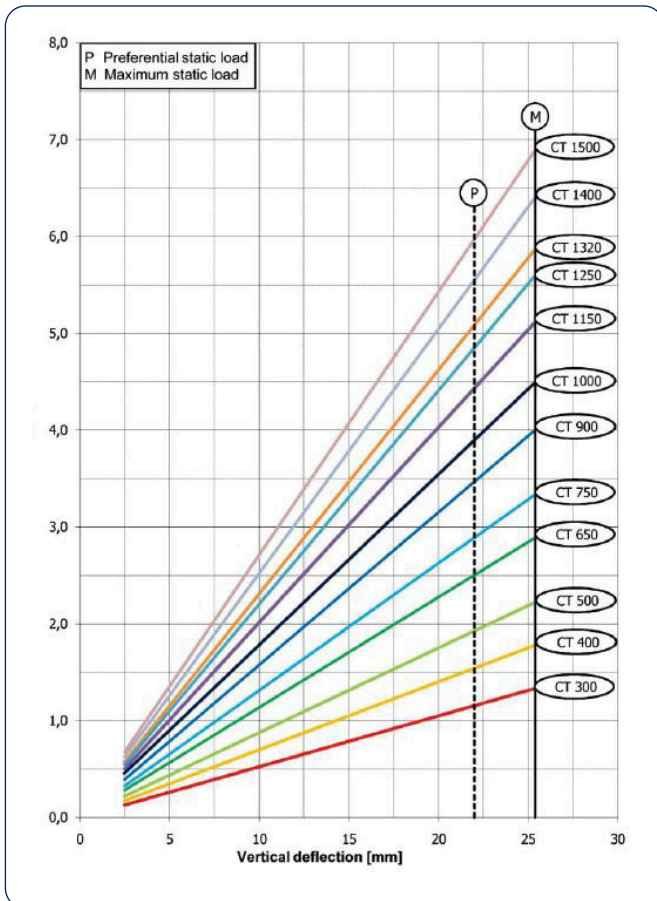
All information in this datasheet is for guidance only based on current knowledge and may be subject to change and correction.

# SM.CT Spring Mounts

TYPE	VERTICAL STIFFNESS (N/ MM)	HORIZONTAL STIFFNESS AT PREFERENTIAL LOAD (N/MM)	MAX LOAD (N) 25.4mm DEFLECTION 3.14 Hz	PREFERENTIAL LOAD (N) 21.84mm DEFLECTION 3.38 Hz
SM.CT300	52,5	40,5	1334	1156
SM.CT400	70,1	53,6	1779	1541
SM.CT500	87,6	65,5	2224	1926
SM.CT650	113,8	62,4	2891	2504
SM.CT750	131,4	92,0	3336	2890
SM.CT900	157,6	108,8	4003	3467
SM.CT1000	175,3	119,4	4453	3857
SM.CT1150	201,4	137,2	5116	4431
SM.CT1250	219,2	139,0	5567	4822
SM.CT1320	231,2	141,1	5872	5086
SM.CT1400	252,2	145,7	6406	5548
SM.CT1500	271,4	147,3	6895	5972



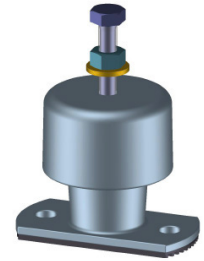
## Vertical load/deflection characteristics SM.CT



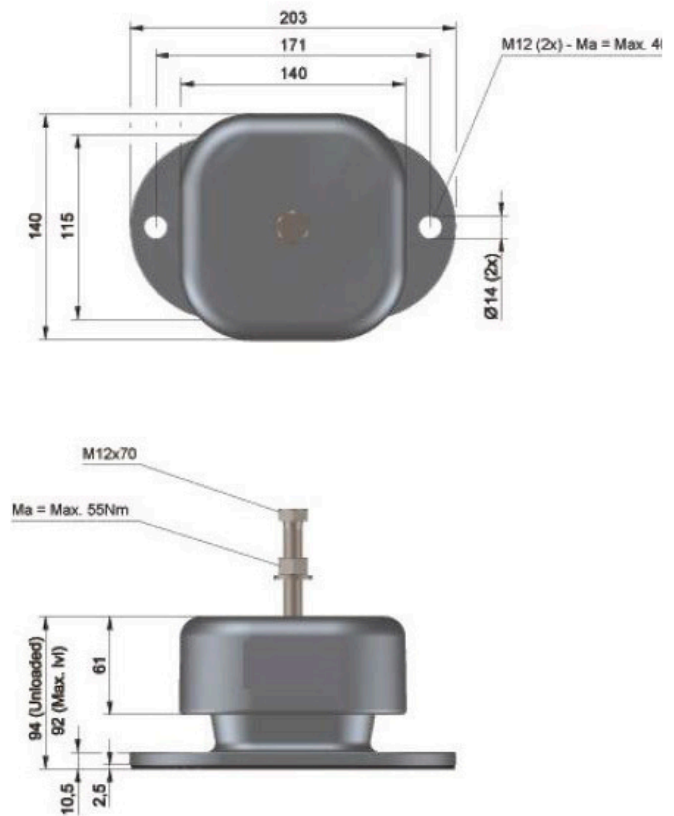
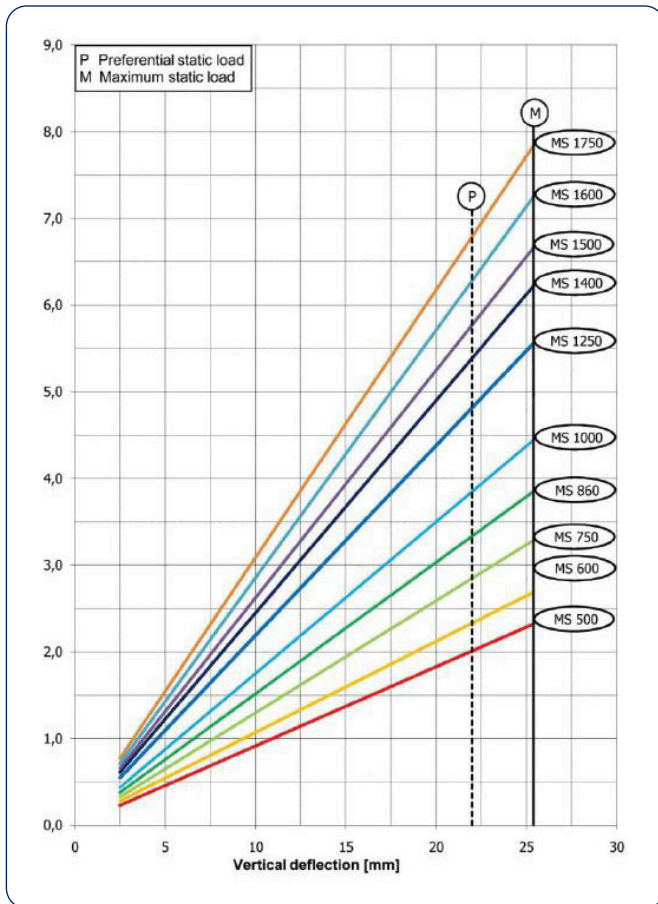
All information in this datasheet is for guidance only based on current knowledge and may be subject to change and correction.

# SM.MS Spring Mounts

TYPE	VERTICAL STIFFNESS (N/ MM)	HORIZONTAL STIFFNESS AT PREFERENTIAL LOAD (N/MM)	MAX LOAD (N) 25.4mm DEFLECTION 3.14 Hz	PREFERENTIAL LOAD (N) 21.84mm DEFLECTION 3.38 Hz
SM.MS500	91,5	34,0	2320	2010
SM.MS600	115,6	41,9	2926	2535
SM.MS750	130,0	46,5	3290	2850
SM.MS860	151,6	53,1	3850	3335
SM.MS1000	175,0	60,5	4445	3850
SM.MS1250	219,0	72,5	5560	4815
SM.MS1400	245,0	77,7	6221	5394
SM.MS1500	262,5	82,0	6665	5780
SM.MS1600	285,7	91,4	7253	6290
SM.MS1700	308,9	100,8	7841	6800



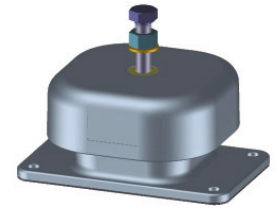
## Vertical load/deflection characteristics SM.MS



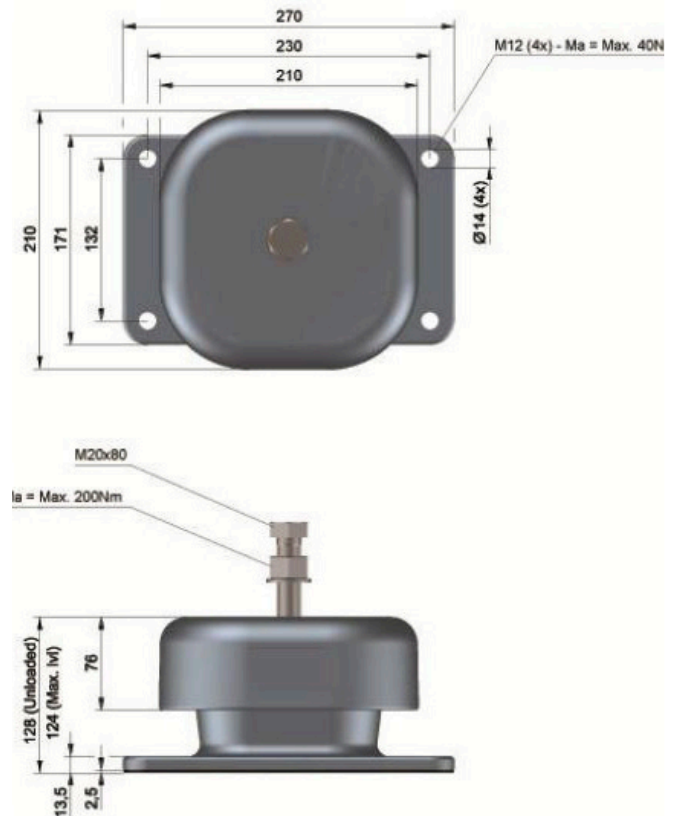
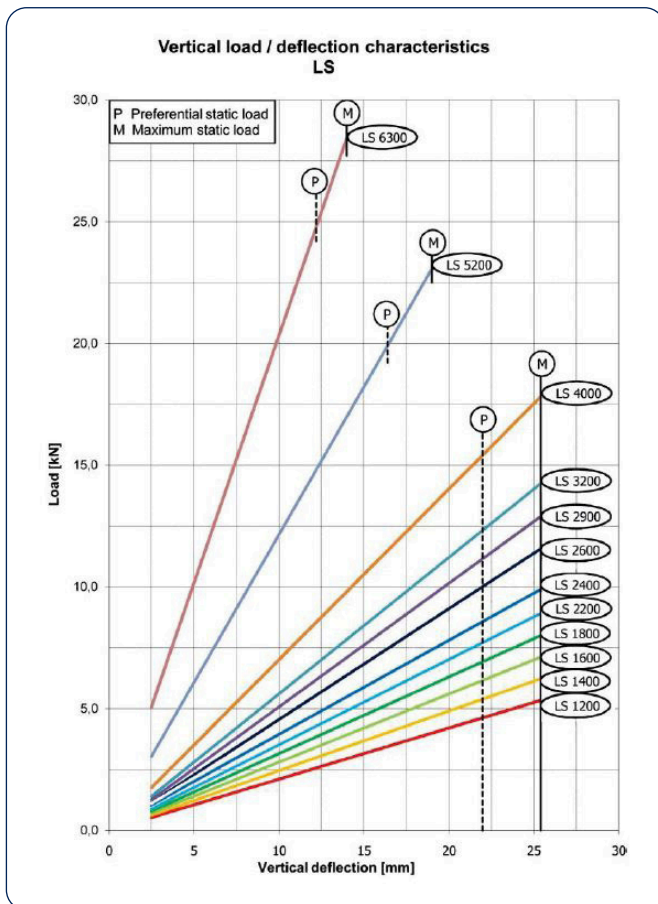
All information in this datasheet is for guidance only based on current knowledge and may be subject to change and correction.

# SM.LS Spring Mounts

TYPE	VERTICAL STIFFNESS (N/ MM)	HORIZONTAL STIFFNESS AT PREFERENTIAL LOAD (N/MM)	MAX LOAD (N) 25.4mm DEFLECTION 3.14 Hz	PREFERENTIAL LOAD (N) 21.84mm DEFLECTION 3.38 Hz
SM.LS1200	210,4	157,8	5345	4597
SM.LS1400	245,3	177,4	6231	5381
SM.LS1600	280,2	197,0	7117	6165
SM.LS1800	315,2	230,5	8007	6935
SM.LS2000	350,2	264,0	8896	7704
SM.LS2200	402,8	300,4	10230	8861
SM.LS2400	420,8	314,2	10689	9258
SM.LS2600	455,3	336,8	11565	10017
SM.LS2900	507,9	365,4	12890	11173
SM.LS3200	560,4	394,0	14234	12329
SM.LS4000	700,8	504,2	17800	15400
SM.LS5200	1214,7	766,1	23140	19900
SM.LS6300	2031,5	1157,8	28906	24860



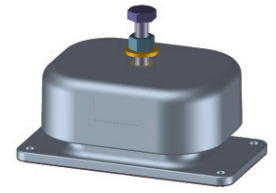
## Vertical load/deflection characteristics SM.LS



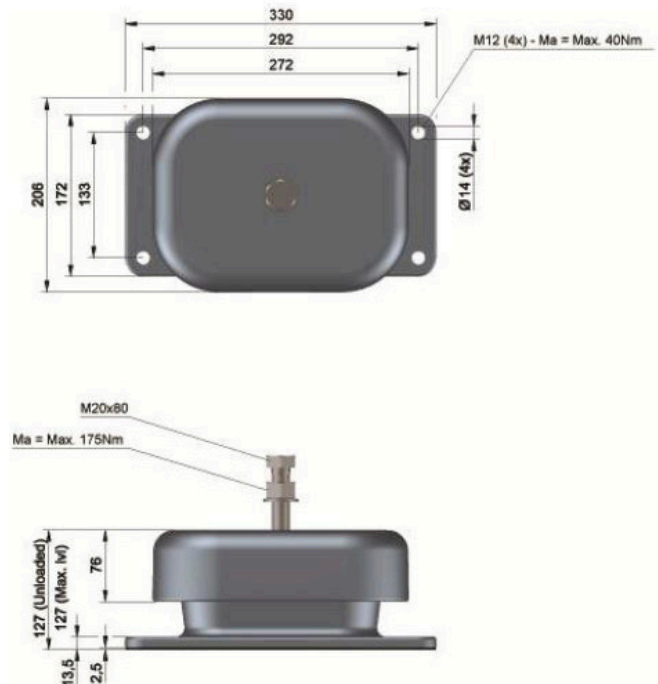
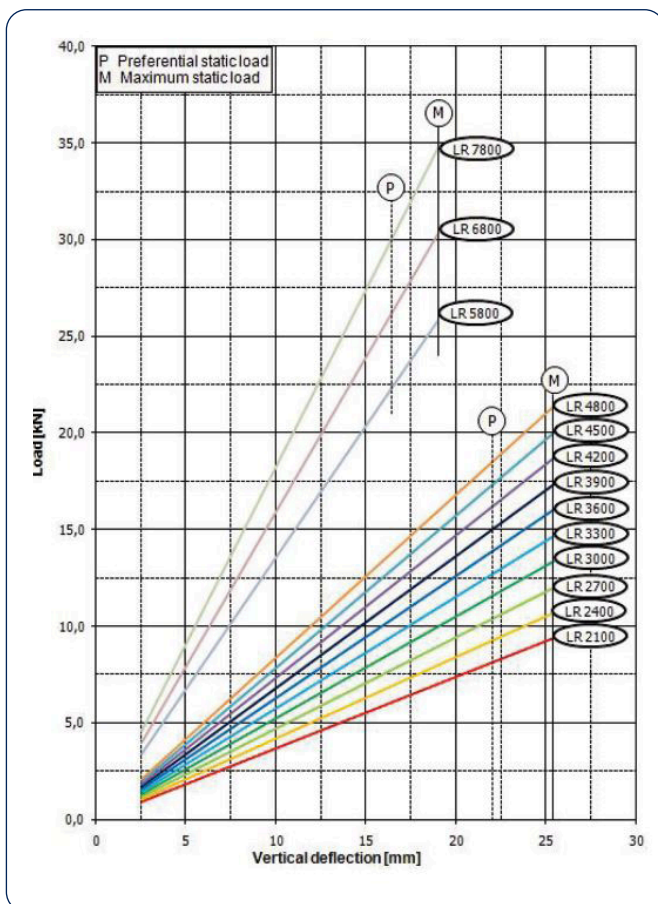
All information in this datasheet is for guidance only based on current knowledge and may be subject to change and correction.

# SM.LR Spring Mounts

TYPE	VERTICAL STIFFNESS (N/ MM)	HORIZONTAL STIFFNESS AT PREFERENTIAL LOAD (N/MM)	MAX LOAD (N) 25.4mm DEFLECTION 3.14 Hz	PREFERENTIAL LOAD (N) 21.84mm DEFLECTION 3.38 Hz
SM.LR2100	368,2	258,9	9353	8043
SM.LR2400	420,3	295,5	10676	9248
SM.LR2700	473,4	346,0	12010	10402
SM.LR3000	525,3	396,0	13344	11556
SM.LR3300	577,9	432,4	14679	12712
SM.LR3600	630,4	168,8	16013	13869
SM.LR3900	683,0	505,2	17348	15026
SM.LR4200	735,5	534,0	18682	16182
SM.LR4500	788,0	562,4	20017	17338
SM.LR4800	840,6	591,0	21351	18494
SM.LR5800	1360,0	815,0	25804	22279
SM.LR6800	1594,0	956,0	30257	26065
SM.LR7800	1828,0	1149,0	34710	29850



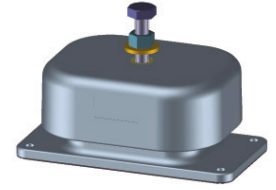
## Vertical load/deflection characteristics SM.LR



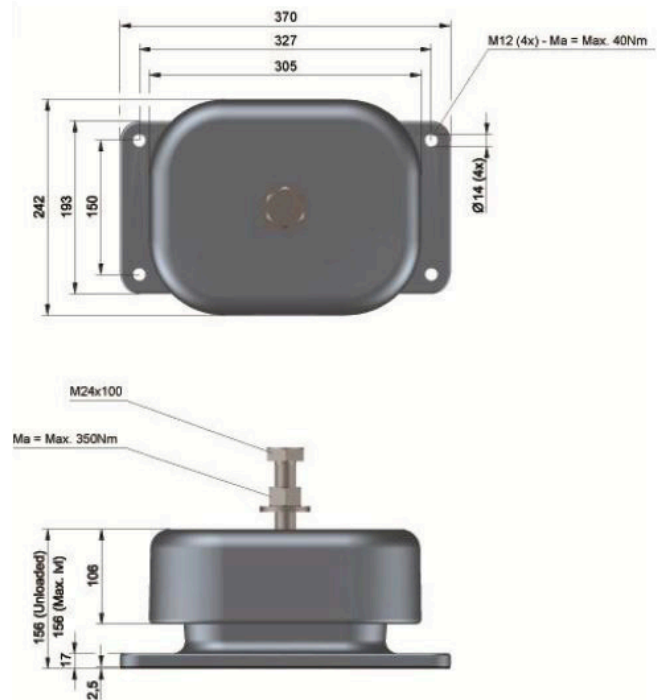
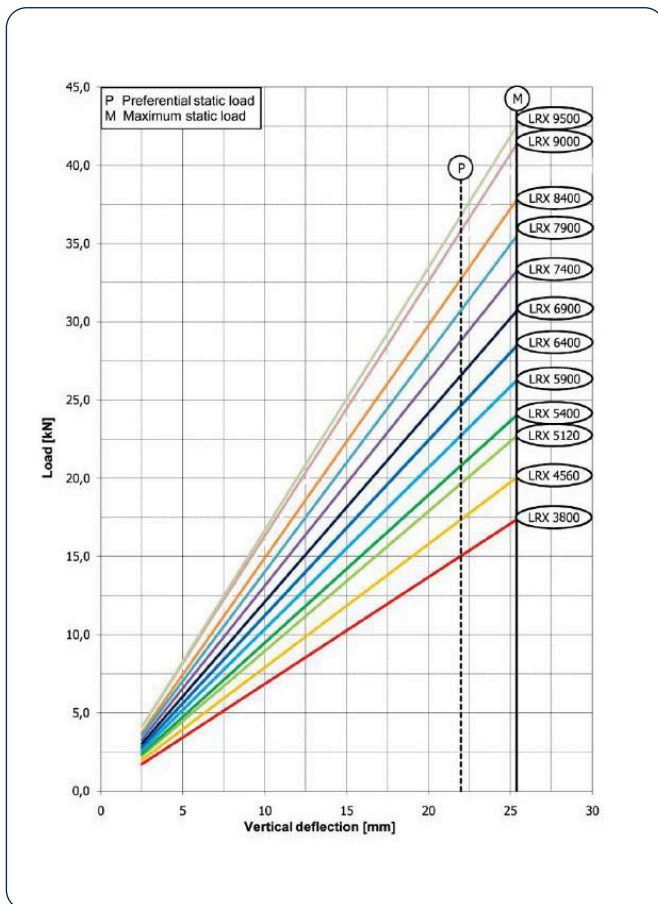
All information in this datasheet is for guidance only based on current knowledge and may be subject to change and correction.

# SM.LRX Spring Mounts

TYPE	VERTICAL STIFFNESS (N/ MM)	HORIZONTAL STIFFNESS AT PREFERENTIAL LOAD (N/MM)	MAX LOAD (N) 25.4mm DEFLECTION 3.14 Hz	PREFERENTIAL LOAD (N) 21.84mm DEFLECTION 3.38 Hz
SM.LRX3800	684,0	466,0	17370	15045
SM.LRX4560	789,0	537,6	20042	17359
SM.LRX5120	894,0	609,1	22714	19674
SM.LRX5400	945,6	652,8	24020	20804
SM.LRX5900	1033,2	710,0	26244	22731
SM.LRX6400	1120,8	766,4	28469	24658
SM.LRX6900	1208,4	823,2	30683	26585
SM.LRX7400	1310,0	840,3	33273	27702
SM.LRX7900	1411,6	874,5	35853	32171
SM.LRX8400	1488,4	863,7	37810	32749
SM.LRX9000	1590,0	880,8	40390	34984
SM.LRX9500	1664,0	903,0	42260	46602



## Vertical load/deflection characteristics SM.LRX



All information in this datasheet is for guidance only based on current knowledge and may be subject to change and correction.